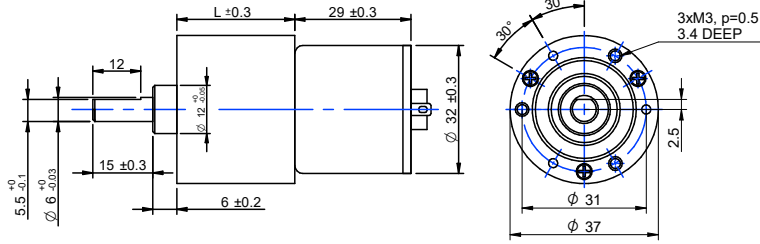


SDC3729 / Ø 37mm / 3.14W / 3.17W

DRAWING (mm)



PHOTO



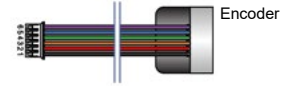
MODEL NO. DESIGNATION

SDC3729 - VOLTAGE - REDUCTION - F - E - C

Example: SDC3729-12-10

F = EMC Filter
E = Encoder
C = Plastic encoder cover

ADDITIONAL



GEAR MOTOR DATA

Reduction	6:1	16:1	21:1	31:1	56:1	75:1	104:1	125:1	156:1	188:1	219:1	250:1	312:1	469:1	625:1	750:1	938:1	1875:1	3750:1	5625:1
Nominal torque 12 V (mNm) *	29	69	90	121	218	261	362	435	543	588	588	588	588	588	588	588	588	588	588	588
Nominal speed 12 V (rpm) *	800	310	245	155	90	67	49	41	33	28	24	21.5	17.6	12.3	9.1	7.8	6.3	3.2	1.6	1
Nominal torque 24 V (mNm) *	30	71	94	125	225	270	374	450	561	588	588	588	588	588	588	588	588	588	588	588
Nominal speed 24 V (rpm) *	780	308	240	150	87	65	48	40	32	27	23.5	21.5	17.5	12	9	7.8	6.2	3.2	1.6	1
Length (mm)	51	54	54	56	56	59	59	59	59	59	61	61	61	61	61	64	64	64	66	66
Weight (g)	172	178	178	184	184	192	192	192	192	192	196	196	196	196	196	203	203	203	206	206

* Nominal speed and nominal torque have a tolerance of $\pm 15\%$

GEAR HEAD DATA

Reduction	6:1	16:1	21:1	31:1	56:1	75:1	104:1	125:1	156:1	188:1	219:1	250:1	312:1	469:1	625:1	750:1	938:1	1875:1	3750:1	5625:1
Max. continuous torque (mNm)	98	196	196	294	392	490	490	588	588	588	588	588	588	588	588	588	588	588	588	588
Intermittently permissible torque (mNm)	294	588	588	883	1177	1471	1471	1765	1765	1765	1765	1765	1765	1765	1765	1765	1765	1765	1765	1765
Efficiency (%)	81	73	73	66	66	59	59	59	59	59	53	53	53	53	53	48	48	48	43	43
Length (mm)	21.8	24.6	24.6	27.1	27.1	29.5	29.5	29.5	29.5	29.5	32	32	32	32	32	34.5	34.5	34.5	37	37
Weight (g)	97	103	103	109	109	117	117	117	117	117	121	121	121	121	121	128	128	128	131	131

GEAR MOTOR FEATURES AND STANDARD DATA

	STANDARD	CUSTOMIZATION OPTIONS
Type	Spur gear brush DC motor	
Motor type	Iron core, commutation	Winding parameters
Motor terminals	Soldering ears	Wiring harnesses, cables and connectors
EMC filter	Yes	Yes
Gears	Straight teeth metal gears produced by	Plastic
Motor pinion gear	Bakelite	Metal
Bearing	Sleeve bearing	
Shaft	Hardened stainless steel	Dimensions
Encoder option	Magetic encoder (to order as option)	Through shaft dimensions
Operating temperature	-10...+60 °C	-40...+60 °C
Backlash no load	$\leq 2^\circ$	
Radial load 10 mm from gear flange	≤ 9.81 N	
Shaft axial load	≤ 6.9 N	
Shaft press fit force max.	≤ 49 N	
Radial play	≤ 0.05 mm	
Thrust play	≤ 0.35 mm	
Manufacturing quality standards	ISO 9001	
RoHS compliance	Yes	
CE label	No	Yes
UL approval	No	Yes

MOTOR DATA

Nominal voltage (V)	12	24
No load speed (rpm)	6200	6200
No load current (mA)	≤ 120	≤ 60
Nominal speed (rpm)	5100	5000
Nominal torque (mNm)	5.9	6.1
Nominal current (mA)	≤ 470	≤ 210
Stall torque (mNm)	33	31
Starting current (A)	2	0.9
Output (W)	3.14	3.17
Length (mm)	29	29
Weight (g)	75	75