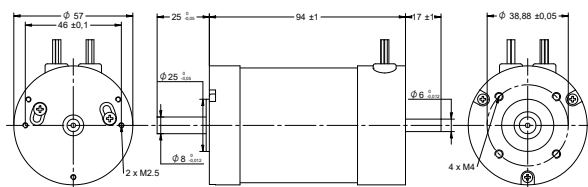
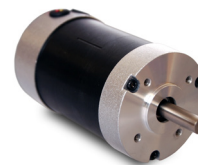


## DRAWING (mm)



## PHOTO

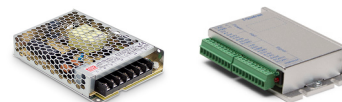


## MODEL NO. DESIGNATION

BR5793 - VOLTAGE

Example: BR5793-12

## ACCESSORIES



● C = customizations are offered on demand even for smaller quantities. Typical customizations are indicated with a green dot at column end. Please contact us for any customization request.

BRUSHLESS DC MOTOR DATA		BR5793-12	BR5793-24	C
Nominal voltage	V	12	24	
Commutator hall voltage	V	5 ~ 24	5 ~ 24	
No load speed	rpm	5500	5200	
No load current	A	1.2	1.2	
Nominal speed	rpm	4000	4000	
Nominal torque	mNm	330	320	
Nominal current	A	14	8	
Start/Stall torque	mNm	990	990	
Efficiency	%	85	68	
Nominal power	W	140	130	
Terminal resistance	Ω	0.064	0.19	
Terminal inductance	mH	0.15	0.61	
Torque constant	mNm/A	24	40	
Rotor inertia	gcm <sup>2</sup>	170	170	
Bearing type		Ball bearing		
Axial play at axial load < 3.5 N	mm	0.025		
Axial play at axial load > 3.5 N	mm	0.025		
Radial play	mm	0.025		
Max. dynamic axial load	N	15		
Max. radial load <sup>1</sup>	N	75		

## NOTES

1. 10 mm from flange.

OTHER BRUSHLESS DC MOTOR DATA		BR5793-12	BR5793-24	C
Number of pole pairs		2		
Number of phases		3		
Weight	g	950	1000	
Operating temperature	°C	-20 to 50		
Max. winding temperature	°C	130		
Motor insulation class		B		
IP rating		IP40		
Hall sensors and power harness length	mm	330		
Power harness		UL1332 AWG16		
Hall sensors harness		UL1430 AWG26		
Shaft length from flange	mm	25 ●		
Shaft diameter Ø	mm	8		
Service life	h	10000		
Manufacturing standard		ISO9001   ISO14001   TS16949		

CABLE AND PIN CONFIGURATION				C
Power		Hall		
Phase	Cable color	Phase	Cable color	
U	YEL	HU	BLU	
V	RED	HV	GRN	
W	BLK	HW	WHT	
		+5V	RED	
		GND	BLK	