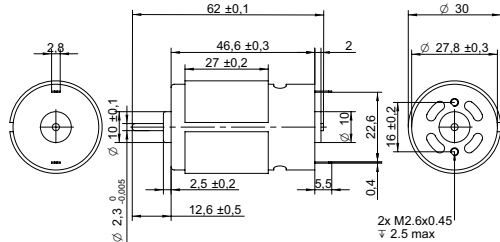
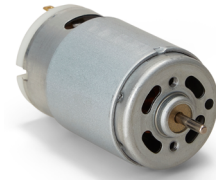


DRAWING (mm)



PHOTO



MODEL NO. DESIGNATION

MODEL	-	BRUSH TYPE	-	ELECTRONIC COMPONENT
		C: Carbon brush M: Metal brush		C: Capacitor V: Varsitor

Example: JD5-14200-CVC

OPTIONS POWER SUPPLIES

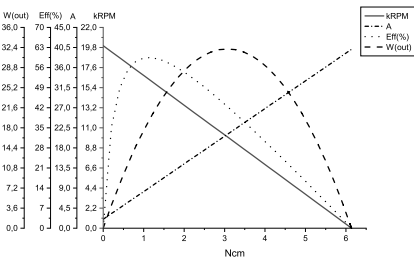


● C = customizations are offered on demand even for smaller quantities. Typical customizations are indicated with a green dot at column end. Please contact us for any customization request.

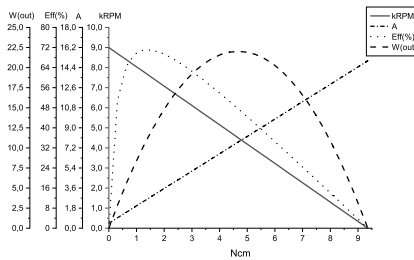
MOTOR DATA					C
Model number		JD5-14200-CVC	JD5-3723-CVC	JD5-2655-CVC	JD5-18115-CVC
Diameter	mm	30	30	30	30
Length	mm	46.6	46.6	46.6	46.6
Nominal voltage	V	3.6	6	12	24
No load current	A	2	0.45	0.15	0.09
Nominal current	A	8.9	2.5	0.9	0.4
Start/Stall current	A	40	15	4.8	2.8
No load speed	rpm	20000	9000	7200	7200
Nominal speed	rpm	16000	7500	5900	6300
Nominal torque	mNm	11	13	12	11
Start/Stall torque	mNm	61	94	78	88
Nominal power	W	19	11	7.5	7.2
Efficiency	%	59	72	73	74

COMMON MOTOR DATA					C
Shaft diameter	mm	2.3			●
Number of pole pairs		1			
Number of commutator segments		5			
Weight	g	150			
Service life	hrs	500 to 1000			
Operating temperature	°C	-10 to +60			●
Housing material		Galvanized steel			
Shaft material		High-carbon steel			●
Magnet material		Ferrite			
IP rating		IP40			
Motor insulation class		Level A			●

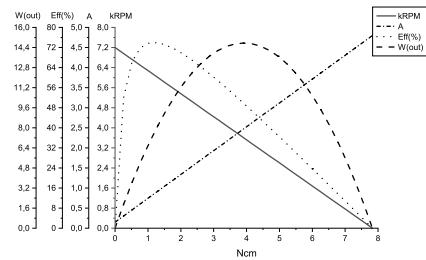
MOTOR DATA GRAPH - JD5-14200-CVC



MOTOR DATA GRAPH - JD5-3723-CVC



MOTOR DATA GRAPH - JD5-2655-CVC



MOTOR DATA GRAPH - JD5-18115-CVC

